

| | | | | |
|-----|-----------|-------------------------------|----|----|
| 2 | NOV.01.23 | ISSUED FOR UPDATED DP | PS | HR |
| 1 | AUG.02.23 | ISSUED FOR DEVELOPMENT PERMIT | PS | HR |
| REV | DATE | DESCRIPTION | DR | RV |

DRAWINGS AND SPECIFICATIONS, AS INSTRUMENTS OF SERVICE, ARE THE PROPERTY OF APLIN & MARTIN CONSULTANTS LTD. THE COPYRIGHT IN THE SAME BEING RESERVED TO THEM. NO REPRODUCTION IS ALLOWED WITHOUT THE PERMISSION OF APLIN & MARTIN CONSULTANTS LTD. AND WHEN MADE MUST BEAT ITS NAME. ALL PRINTS TO BE RETURNED.

THIS DRAWING MUST NOT BE SCALED. THE CONTRACTOR IS TO VERIFY ALL DRAWING DIMENSIONS AND DATA NOTED HEREIN WITH CONDITIONS ON THE SITE AND IS HELD RESPONSIBLE FOR REPORTING DISCREPANCIES TO APLIN & MARTIN CONSULTANTS LTD. THIS DRAWING IS NOT TO BE USED FOR CONSTRUCTION PURPOSES UNTIL SIGNED BY THE CONSULTANT.

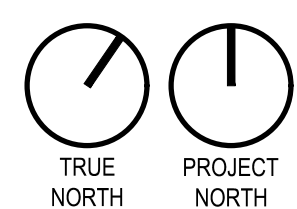
PROJECT:
MULTI-FAMILY DEVELOPMENT

MILTON STREET, PRIDEAUX ST., NANAIMO, BC

SHEET TITLE:
SITE / GROUND FLOOR PLAN

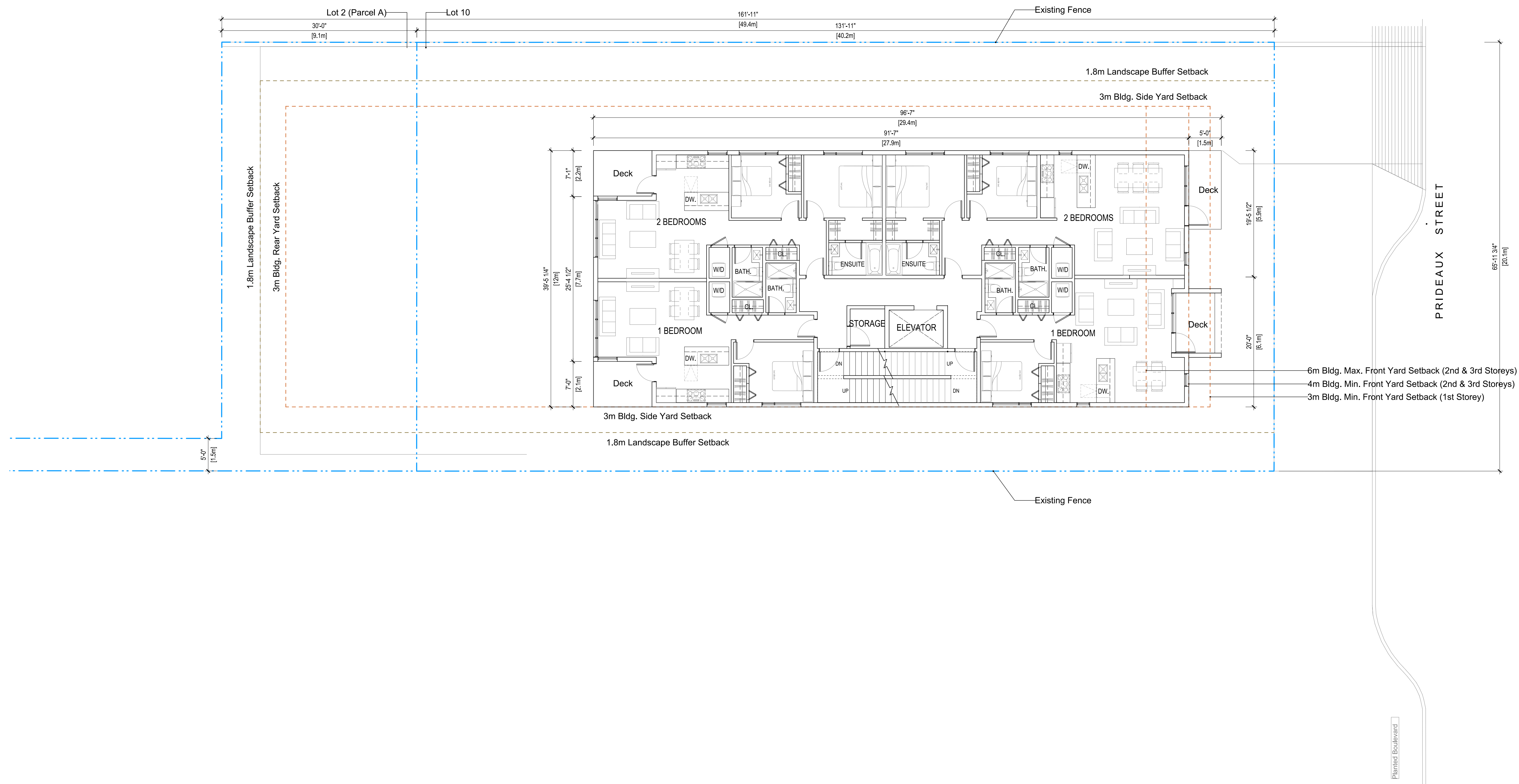
RECEIVED
DP1316
2023-NOV-01
Current Planning

| | |
|-----------------------------|-------------------------|
| SCALE 1/8" = 1'-0" | REVISION 1 |
| DRAWINGS NO. A1.3 | PROJECT NO. 22-8023A |



1
A1.3
SCALE: 1/8" = 1'-0"

SITE / GROUND FLOOR PLAN



| | | | | |
|-----|-----------|-------------------------------|----|----|
| 2 | NOV.01.23 | ISSUED FOR UPDATED DP | PS | HR |
| 1 | AUG.02.23 | ISSUED FOR DEVELOPMENT PERMIT | PS | HR |
| REV | DATE | DESCRIPTION | DR | RV |

DRAWINGS AND SPECIFICATIONS, AS INSTRUMENTS OF SERVICE, ARE THE PROPERTY OF APLIN & MARTIN CONSULTANTS LTD. THE COPYRIGHT IN THE SAME BEING RESERVED TO THEM. NO REPRODUCTION IS ALLOWED WITHOUT THE PERMISSION OF APLIN & MARTIN CONSULTANTS LTD. AND WHEN MADE MUST BEAR ITS NAME. ALL PRINTS TO BE RETURNED.

THIS DRAWING MUST NOT BE SCALED. THE CONTRACTOR IS TO VERIFY ALL DRAWING DIMENSIONS AND DATA NOTED HEREIN WITH CONDITIONS ON THE SITE AND IS HELD RESPONSIBLE FOR REPORTING DISCREPANCIES TO APLIN & MARTIN CONSULTANTS LTD. THIS DRAWING IS NOT TO BE USED FOR CONSTRUCTION PURPOSES UNLESS SIGNED BY THE CONSULTANT.

PROJECT:
**MULTI-FAMILY
DEVELOPMENT**

MILTON STREET, PRIDEAUX ST.,
NANAIMO, BC

LEVEL 2&3 PLANS

RECEIVED
DP1316
2023-NOV-01
Current Planning

| | |
|--------------|-------------|
| SCALE | REVISION |
| 1/8" = 1'-0" | 1 |
| DRAWING NO. | PROJECT NO. |
| A2.1 | 22-8023A |

LEVEL 2&3 PLANS

1 A2.1 SCALE: 1/8" = 1'-0"

TRUE NORTH PROJECT NORTH